



CONCORD
CHAMBER ORCHESTRA

Jamin Hoffman, Music Director



Concord Chamber Orchestra was founded in 1975 to provide talented volunteer musicians the opportunity to create stimulating musical experiences for the enjoyment and inspiration of Milwaukee-area audiences. Concord's musicians practice a wide variety of professions, and come from all age groups. They share a deep love of music and the joy of performing it with like-minded people.

Through its annual concerto competition, Concord gives an outstanding young musician the opportunity to perform with an orchestra as well as a scholarship to continue their education.

Funding for Concord is provided by a number of generous individual and corporate benefactors. We gratefully acknowledge the Bradley Foundation, the Milwaukee County Cultural Artistic & Musical Programming Advisory Council (CAMPAC), the Wisconsin Arts Board and the many donors who make these concerts possible.

Dance the Night Away at
A Night in Old Vienna

Saturday, November 19, 2011

Grand Ballroom of the Pfister Hotel, Milwaukee

The Grand Ballroom of the Pfister Hotel will be transformed into Old Vienna for our annual fundraiser Ball. The event will be held beginning at 5:30 p.m. and will include a grand entrance, 3-course dinner, and dancing to traditional Viennese and strict tempo ballroom selections performed by the Concord Chamber Orchestra.

Tickets are \$100 per person. For more information, or to request an invitation, visit www.nightinoldvienna.com.

Save big on our already affordable prices with a season ticket package that includes a free bonus chamber music concert!

Visit us online at www.concordorchestra.org. From there, you can friend us on Facebook or follow us on Twitter.



Non-Profit Org.
U.S. Postage
PAID
Milwaukee, WI
Permit No. 960

Return Service Requested



P.O. Box 370857
Milwaukee, WI 53237-1957

www.concordorchestra.org

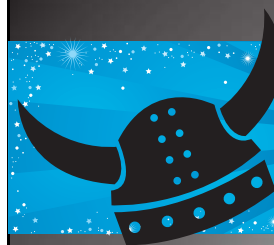


**Give yourself a much-deserved
Night Out... at the CCO**



A Night Out...

2011-2012 Season



...at the Opera



...at the Ballet



...at the Theater



...at the Movies

2011-12 Concert Season

A Night Out...

For our 36th season, the Concord Chamber Orchestra invites you to spend "A Night Out" with us, celebrating those who entertain us when we leave our homes behind!

...at the Opera
8:00 p.m., Saturday, October 8, 2011



St. Matthew's Evangelical Lutheran Church, Wauwatosa

The Concord Chamber Orchestra features a quartet of Milwaukee's finest young singers – Erin Sura, soprano; Colleen Brooks, mezzo-soprano; Stuart Mitchell, tenor; and Timothy Rebers, bass-baritone – singing favorite arias, duets, and a quartet from the operatic repertoire. Framed by instrumental highlights from great operas, this night out is sure to have you singing your way home.

In keeping with our opening concert tradition, anyone dressed in operatic costume gets in free!

- "Overture" to *The Abduction from the Seraglio*, by Wolfgang Amadeus Mozart
- "Una furtiva lagrima" from *L'Elisir d'Amore* by Gaetano Donizetti
- "Parto, parto" from *La Clemenza di Tito* by Wolfgang Amadeus Mozart
- "Intermezzo" from *Cavalleria Rusticana* by Pietro Mascagni
- "Overture" to *Nabucco*, by Giuseppe Verdi
- "Song to the Moon" from *Rusalka*, by Antonin Dvorák
- "Chanson Bachique" from *Hamlet*, by Ambroise Thomas
- "Mir ist so wunderbar" from *Fidelio*, by Ludwig van Beethoven
- Excerpts from *Carmen*, by Georges Bizet

...at the Ballet
8:00 p.m., Saturday, December 3, 2011



The Basilica of St. Josaphat, Milwaukee

The Christmas season is not complete without Tchaikovsky's *Nutcracker*, and we are delighted to bring you excerpts from this holiday classic, combined with fiery ballet music from Spanish composer Manuel de Falla. The Milwaukee High School of the Arts chorus rounds off our traditional holiday choral concert with composer Christopher Tin's Grammy-award winning song cycle, *Calling All Dawns*.

- Concert Suite from *El Amor Brujo*, by Manuel de Falla
- Suite from *The Nutcracker*, by Pyotr Ilyich Tchaikovsky
- Calling All Dawns*, by Christopher Tin

Bonus Concert

Chamber Music Sampler

2:00 p.m., Sunday, January 29, 2012

Nicolet High School, Glendale

A special concert and unique opportunity to hear a variety of chamber music ensembles featuring members of the CCO. Free for season ticket holders!



...at the Theatre
8:00 p.m., Saturday, March 24, 2012



St. Matthew's Evangelical Lutheran Church, Wauwatosa

In addition to the winner of our annual Dorothy J. Oestreich Concerto Competition, this concert features several well-known pieces composed for the theatre.

- Overture to *Candide*, by Leonard Bernstein
- Concerto to be determined by the winner of the Dorothy J. Oestreich Concerto Competition
- Incidental Music from *A Midsummer Night's Dream*, by Felix Mendelssohn
- Suite from *Peer Gynt*, by Edvard Grieg
- Broadway Tonight*, arr. by Bruce Chase

...at the Movies
8:00 p.m., Saturday, May 19, 2012



St. Matthew's Evangelical Lutheran Church, Wauwatosa

Our final concert of the season features music from some of the biggest movies of all time, in a tribute to the composers of today who write the classics of tomorrow!

- Star Trek Through the Years*, arranged by Calvin Custer
- Titanic* Medley, by James Horner
- Lord of the Rings* Symphonic Medley, by Howard Shore
- "Lara's Theme" from *Dr. Zhivago*, by Maurice Jarre
- Medley from *Mary Poppins*, arranged Bob Lowden
- Selections from *Exodus*, by Ernest Gold
- Selections from *The Sting*, by Scott Joplin
- Adventures in Cinema*, by John Williams
- Highlights from *The Sound of Music*, by Richard Rodgers

All programs are subject to change.

For more information, visit www.concordorchestra.org or call 414-750-4404

Concord Chamber Orchestra Ticket Order Form

Name _____

Address _____

City _____ State _____ Zip _____

Phone _____

Email _____

Season Tickets (includes free Chamber Music Sampler ticket)

_____ Adult tickets @ \$60 = \$ _____

_____ Student tickets @ \$38 = \$ _____

_____ Senior tickets @ \$42 = \$ _____

Total enclosed \$ _____

Season ticket pricing reflects 25% or more savings from individual ticket prices.

Ask about group rates for orders of 10 or more.

Individual Tickets

Date / Program	Adult	Student	Senior
Oct. 8 ...at the Opera	_____ x \$18	_____ x \$12	_____ x \$12
Dec. 3 ...at the Ballet	_____ x \$25	_____ x \$15	_____ x \$20
Jan. 29 Sampler	_____ x \$18	_____ x \$12	_____ x \$12
Mar. 24 ...at the Theatre	_____ x \$18	_____ x \$12	_____ x \$12
May 19 ...at the Movies	_____ x \$18	_____ x \$12	_____ x \$12

Total enclosed \$ _____

To qualify for Senior rates, ticketholder should be age 62+. Students should be college-age or younger.

Charitable Donation

I would like to make a tax deductible donation of \$ _____.

Payment

Please detach and send with a check payable to the Concord Chamber Orchestra
P.O. Box 370857 ★ Milwaukee, WI 53237-1957

To purchase tickets using a credit card, visit our website at www.concordorchestra.org.